

MASTER PLAN IMPLEMENTATION STRATEGY & BUDGET CONSIDERATIONS

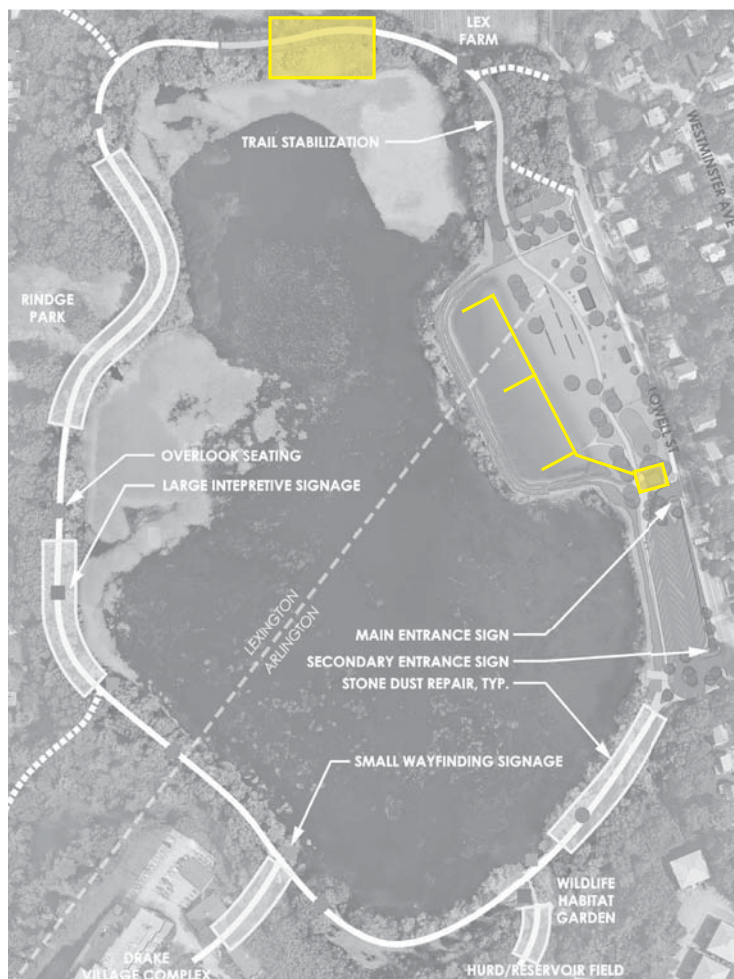
Budget Summary

The following budget outline identifies basic work efforts related to the potential refurbishment of The Res. Cost could vary considerably based on the manner in which the improvements are grouped, the time it takes to implement the full extent of improvements, and the material selections of the actual improvements. As with the plans themselves, these estimates are conceptual in nature and will require confirmation and refinement as actual improvements are contemplated.

Table 13. Budget Summary	
Phase I	\$991,000
Phase II	\$3,687,000
Grand Total	\$4,678,000

Phasing

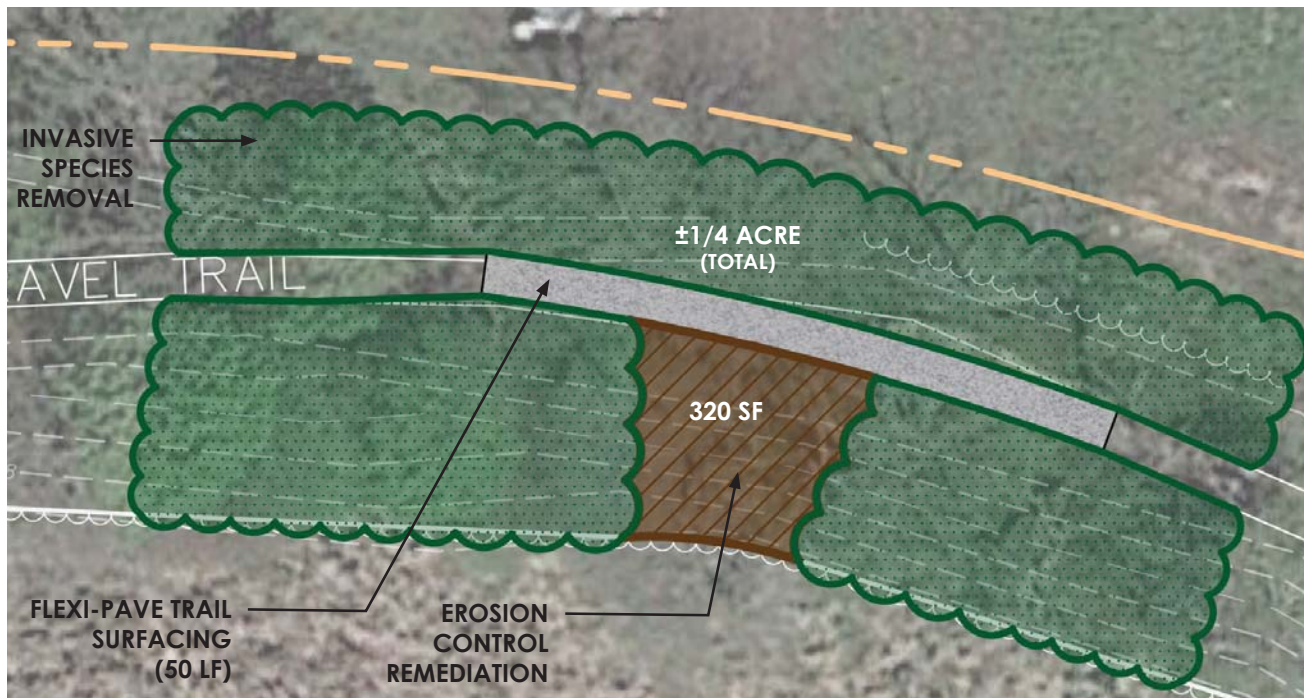
A potential improvement phasing program has been identified and is based on the specific needs and preferences expressed at public hearings and through discussions with the Town and the Reservoir Working Group. The plan below depicts the specific areas included within the Phase I scope of improvements in yellow.



Phase I improvement areas

PHASE I PROGRAM

Given that the mechanical equipment and Pump House Building were found to need immediate repair and/or replacement to ensure the continued operation of the bathing beach, these facilities have been identified as a critical need and is the focus of the Phase I improvements. Additionally, the first phase will focus on a pilot area of the trail and reservoir perimeter, which is graphically depicted below and indicated as the northernmost rectangle on the previous page’s diagram. Improvements consist of repairing erosion control issues, removing invasive plant species, adding native species as needed, laying new permeable and accessible trail surfacing, ensuring positive drainage, and protection of existing roots.



Pilot area identified as part of the phase I improvement program

With the bathing beach both as a beloved recreational and revenue-generating resource for the town, Phase I improvements would occur in between bathing beach seasons. Construction would begin at the close of one bathing beach season and would finish at the start of the next season. Table 14 below summarizes the items included under the Phase I program. A more detailed breakdown of budget considerations is included as Appendix M.

Table 14. Phase I Program	
Demolition and Site Preparation	\$20,000
Piloting of Trail and Reservoir Perimeter Improvements	\$20,000
Pump Equipment Repair/Replacement	\$495,000
Pump House Building Repairs	\$138,600
Construction Subtotal	\$673,600
Construction Contingency (10%)	\$134,720
Contractor Mobilization, Overhead and Profit (15%)	\$101,040

Soft Costs (12%), including design, engineering and permitting	\$80,832
Phase I Total	\$990,192
Phase I Total SAY:	\$991,000

PHASE II PROGRAM

Phase II improvements will complete the remainder of trail and reservoir perimeter improvements. Any adjustments to the pilot stabilization strategy would be adjusted based on the successfulness of Phase I. Renovations are planned for the Bathhouse and Concession Building, the main parking facility, perimeter fencing, and gates. A boat launch and interpretive and wayfinding signage are also planned. Additionally, improvements to the infrastructure at the bathing beach include dredging of sediment within the swimming area, removal of invasive vegetation along the embankment, reinforcing the embankment, constructing a weir and armoring the interior embankment walls such that the mechanical system installed in Phase I provides the optimal swimming experience for beachgoers. Specific to the bathing beach, Phase II improvements include a new drop-off area in place of the existing staff parking lot, a formalized entry plaza at the Pump House Building, a new picnic area, a new and relocated children's playground, pathway improvements, seating and fishing overlooks along the earthen berm, a beach volleyball court, replenishment of the beach sand and terraced seating that mitigates sand migration into the swimming area, a pavilion that serves as a multi-use space, new tree and shrub planting and pruning of existing trees. Improvements are planned to improve accessibility around the entire property. Table 15 below summarizes the items included under the Phase II program. A more detailed breakdown of budget considerations is included as Appendix M.

Table 15. Phase II Program	
Demolition and Site Preparation	\$82,000
Remaining Trail and Reservoir Perimeter Improvements	\$252,000
Bathhouse and Concession Building Renovations	\$370,300
Parking Lot, Fence and Gates	\$579,600
Boat Launch	\$9,400
Bathing Beach Infrastructure Improvements (including sediment cleanout)	\$350,000
Interpretive Signage	\$3,000
Additional Renovation Considerations	
Drop-off Area	\$29,100
Entry Plaza	\$38,500
New Picnic Area at the Concession Building	\$60,400
Playground	\$225,000
Pathway Improvements	\$173,200
Overlook Seating	\$13,500
Beach Volleyball	\$2,000
Beach Sand Replenishment	\$32,000

Pavilion	\$87,400
Terraced Seating	\$79,800
New Tree and Shrub Planting	\$100,800
Pruning of Existing Trees	\$20,000
Construction Subtotal	\$2,508,000
Construction Contingency (10%)	\$250,800
Contractor Mobilization, Overhead and Profit (15%)	\$376,200
Soft Costs (12%), including design, engineering and permitting	\$300,960
Phase II Total	\$3,686,760 (should be 3,435,960)
Phase II Total SAY:	\$3,687,000 (should be 3,436,000)
TOTAL PROJECT COST	\$4,678,000

Funding Opportunities

Funding for Phase I was recommended by the Town's Community Preservation Committee and Town Meeting approved that request. Funding beyond that included in the Recreation Department's annual capital budget may be necessary to complete the work outlined in Phase II. There are a number of funding opportunities available for the Town's pursuit and are listed in the table below and on the following page. When awarded, grants typically include a date by which they must be used, which should be considered when making an application. A number of these grants also require a local financial match and/or require that the grant be paid via reimbursement, which means that the Town must have the funds in place at the project's onset in order to be paid in full, as outlined below.

Massachusetts Executive Office of Energy and Environmental Affairs					
Grant Name	Eligibility (specific to The Res)	Maximum Award	Matching Requirements	Application Deadline	Expected Pay
Parkland Acquisition and Renovations for Communities (PARC)	Improvements to existing parks	\$400,000	Reimbursement program	Mid July	
Massachusetts Land and Water Conservation Fund	Development and renovation of parks, recreation and conservation areas	unmin. \$10,000; max \$200,000	Reimbursement program	Early June	

Landscape Partnership Program	To build a park or playground	\$1,250,000	Up to 50% of total eligible project costs; reimbursement program	Late Fall	
Massachusetts Department of Environmental Protection					
Grant Name	Eligibility (specific to The Res)	Maximum Award	Matching Requirements	Application Deadline	
604b Water Quality Management Planning	Green infrastructure projects that manage wet weather to maintain or restore natural hydrology.	\$50,000	Reimbursement program.	Early March	
State Revolving Loan Fund: Clean Water Fund	Upgrades of existing facilities, infiltration/inflow correction, and nonpoint source pollution abatement.	n/a	n/a	Mid October	
Massachusetts Department of Conservation and Recreation					
Grant Name	Eligibility (specific to The Res)	Maximum Award	Matching Requirements	Application Deadline	
Greenways and Trails Program/ Recreational Trails Program	Maintenance and restoration of existing recreational trails; development and rehabilitation of recreational trailside and trailhead facilities	\$5,000 to \$50,000; \$100,000 for larger projects	Must be at least 20% of the total project value.	mid Feb	
Recreational Trails Program - Education Grants	Training on trail accessibility and sustainability; Training that promotes safety or environmental protection related to recreational trails. Partnering with youth organizations, corps or individual volunteers are highly encouraged!	\$8,000 to \$10,000	Must be at least 20% of the total project value.	Rolling	
Army Corp of Engineers (ACOE) Continuing Authorities Program*					

Grant Name	Eligibility (specific to The Res)	Maximum Award	Matching Requirements	Application Deadline	
Emergency Streambank and Shoreline Protection	Construction of emergency shoreline and streambank protection works to protect public facilities	65% Federal; up to \$5m in Fed. cost	35% non-Federal.	Rolling	
Hurricane and Storm Damage Reduction Projects	The study, design, and construction of small coastal storm damage reduction projects.	65% Federal; up to \$10m in Fed. cost	35% non-Federal.	Rolling	
Small Navigation Project Study	To improve navigation including dredging of channels, anchorage areas, and turning basins.	up to \$10m	10% up-front non-Federal during construction and 10 percent over a 30-year period;	Rolling	
Aquatic Ecosystem Restoration Projects	The planning, design and building of projects to restore aquatic ecosystems for fish and wildlife.	65% Federal; up to \$10m in Fed. cost	35% non-Federal.	Rolling	
* ACOE completes the design and construction; feasibility studies can also be conducted by ACOE and ACOE will cover up to \$100,000 of the study cost. Costs over \$100,000 are shared 50/50 with the non-Federal sponsor					
Others					
Grant Name	Eligibility (specific to The Res)	Maximum Award	Matching Requirements	Application Deadline	
MA Department of Fish and Game Division of Ecological Restoration Priority Projects	Projects based on ecological and community benefits and local leadership	Small grants; PM and technical support	Not required, but will be considered in the application.	Late May	
FishAmerica Foundation Grants	To enhance fish populations, restore fishery habitats, improve water quality and advance fishery research.	Contact	Contact	Contact	

Toyota USA Foundation Grants Program	<ul style="list-style-type: none"> • Significance of need • Potential for long-term success/ sustainability • Resourcefulness • Scale of project within the community or geographic region • Innovation and creativity • Ability to measure results • Cost-effectiveness • Diversity, inclusion and financial soundness 	\$50,000 minimum		March - Aug	
--------------------------------------	---	------------------	--	-------------	--

Some grants included within the list above are suited for particular elements within the Phase II program. For example, the three Executive Office of Energy and Environmental Affairs grants can all be used to fund improvements to the bathing beach facilities, arrival plaza and main parking lot. Trail improvements can be supported through Massachusetts Department of Conservation and Recreation’s Recreational Trails Program. Aquatic restoration efforts could be funded through the FishAmerica Foundation Grants, MA Department of Fish and Game Division of Ecological Restoration Priority Projects, and the ACOE Aquatic Ecosystem Restoration grant. Shoreline restoration may be funded through the ACOE Emergency Streambank and Shoreline Protection grant. Refer to Table 18 for eligibility requirements, which have been tailored to pertain to the improvements planned for The Res.

Additionally, there are many stand-alone items within the Phase II program that are great candidates for alternative sources of funding, such as the playground, the beach volleyball court, the wayfinding and/or interpretive signage and the pavilion. There is also an opportunity for volunteer groups to take on some limited elements of the improvement plans.

Potential Funding Strategy

Text to be sent, include grants, and match table

THIS PAGE INTENTIONALLY
LEFT BLANK

MAINTENANCE AND MONITORING CONSIDERATIONS

The Town of Arlington's Public Works Department (DPW) provides maintenance and upkeep services at Arlington Reservoir. Typical costs for maintenance and upkeep of park, recreation, and open space priorities can vary somewhat dramatically based on the extent and type of facilities that are located within a given property. The type of maintenance activity varies depending on the nature of the area being maintained. The following is a general outline of maintenance activities that are need to properly maintain a property of this nature:

WEEKLY

- Mow lawn areas during the growing season.
- Remove trash (daily, multiple times per week or weekly) depending on the season and schedule of events. Visually inspect the property and remove any trash, large weeds or dead plant material.
- Clean, sweep, sanitize and stock supplies in the Men's and Women's restrooms on a daily basis. Ensure that all toilets and sinks are operating properly and free of leaks or clogs.
- Sweep paved areas, including the main parking lot, drop-off area, arrival plaza and pathways, or other areas subject to collecting debris in conjunction with regular grass mowing activities or on an as-needed basis.
- If engineered wood mulch surfacing is used, weekly inspection is needed and raking may be required on a weekly basis, especially under swings and at slide bottoms.
- Perform regular leaf blowing on the trail portions closest to the beach as well as the bathing beach and porous paving areas and their associated concrete pathways.
- Inspect signage regularly; any graffiti should be promptly removed.
- Conduct an invasive species monitoring program as detailed on the following pages.

SEASONALLY/ANNUALLY

- Lay nutrient applications to lawn areas for enhanced turf growth, weed and pest control.
- Spread mulch around planting beds and trees. Mulched areas should be maintained at no less than three inches deep to suppress weeds, retain moisture, dress up the planting beds and encourage soil microbiology. Keep mulch away from base of stems and trunks.
- Monthly visual inspections of playground equipment and safety surfacing should be conducted to observe wear and repair any damage that may occur. A yearly detailed visual inspection is recommended.
- Visually inspect both new and existing tree, shrub and groundcover plantings to identify damaged or diseased trees requiring pruning or removal/replacement.
- Clean the catch basins and other drainage structures to ensure they remain clear of debris and effectively remove storm water from the site.
- New porous pavement should be inspected several times in the first few months after construction to ensure proper installation and drainage. After the first few months of installation, visually inspect it annually and after major storms to check for surface ponding that might indicate possible clogging. Vacuum sweeping of porous pavement should be performed at least twice per year. See section on the following page on porous pavement for further detail on maintenance protocols.
- New rubber-based flexible pavement should be inspected several times in the first year of installation to ensure proper installation and drainage. Perform periodic leaf blowing to prevent natural compost material from forming, accumulating and decaying within the rubber-based flexible pavement so as to not promote the growth of plant seeds, or weeds. In the event that the surface becomes clogged with fine dirt or sand, copious amounts of water should

be applied at low pressure using a garden hose. Do not use pressure washers or abrasive devices such as sweepers on the surface. It is recommended that the manufacturer's recommendations are followed for additional maintenance measures.

- The bathing beach water should be tested daily per state bathing beach requirements. Any findings should be reported to the Town's Board of Health.
- Perform seasonal and emergency maintenance of the reservoir's water level via the outflow gate.
- Remove any seasonal, movable items, such as picnic tables, into a designated storage area, either within the Pump House Building or the Bathhouse and Concession Building.

AS NEEDED

- Complete minor repairs (e.g., replacement/repairs fencing and gate fabric and hardware, playground equipment)
- Repair hardware and bracing that has come loose or is damaged on benches and other site furnishings. Ensure seating surfaces and table tops are clean and free of protrusions and nuts, bolts and/or screws are flush with the surface. Remove any graffiti and ensure that painted surfaces are in good condition, free of rotten wood or rusted metal (dependent on furnishing selections).
- Visually inspect the condition of the beach volleyball court to ensure that court endlines and sidelines are secured, nets are free of tears, support poles have hardware intact and properly anchored and sand is smooth, level and well drained.
- Maintain the play equipment to Consumer Produce Safety Commission (CPSC) and American Society for Testing and Materials (ASTM) standards; set a Certified Playground Safety Inspector (CPSI) inspection schedule based on use, location, materials, etc.
- During winter, snow plowing of the main parking lot and sidewalks on an as needed basis.
- Paint striping at parking areas every three to five years.
- Visually inspect the Pump House Building and Bathhouse and Concession Building to ensure compliance, safety, and proper operation. Visual inspection should include ensuring that all surfaces are cleanly painted and secure; doors, windows, screens and locks are operational; utility fixtures (electrical panels, plumbing, HVAC, and appliances) are in good working order; fire extinguishers are mounted in their proper location and up-to-date; and the roofs are free of debris and leaks.

Note that this list is not comprehensive and should not substitute for an Operations and Maintenance Plan after implementation has been completed. As funding is pursued and as actual improvements are implemented at Arlington Reservoir, it is important to consider other design and operational approaches (to be adopted now and in the future) in order to simplify and reduce maintenance requirements.

Porous Pavement

It is very important that sand and abrasives not be used for winter maintenance, as they will clog the pores; de-icing materials should be used instead. Porous asphalt tends to retard the formation of ice on the pavement surface, so that the use of de-icing compounds may be drastically curtailed. Snow should be removed with a rubber-tipped shovel or plow. The plow should be kept one inch above the surface. The remaining snow will melt and drain through. Snow piles containing sand (or mulch, soil, or any other granular material) should not be stored on porous pavement.

Accumulated sediment should be removed at least every two to three years. If the porous pavement is damaged, it can be repaired using conventional, non-porous patching mixes, as long as the cumulative area repaired does not exceed 10 percent of the paved area. It is important that sealant

is not applied over the porous pavement because it will prohibit water from passing through the material. The pavement should not be power washed because debris may be pushed further into the pavement and cause clogs as a result. Construction staging should not be performed on unprotected pavement as well.

If clogging becomes an issue, there are a few courses of action to take. First, remove any weeds and vegetation from the surface. Weeds and moss can be removed by hand or with a weed torch; do not use pesticides. Try a more powerful vacuum to deep clean most effectively. If the pavement ultimately fails, it may be worth doing a structural evaluation to ensure it was installed correctly. It is also important that a redundant drainage system be built into the initially such that the porous pavement can act as like conventional pavement if all methods have been exhausted to fix it.

Invasive Species Monitoring Program

Conducting an invasive species monitoring program during the growing season (April 15 to October 15) is recommended at The Res. Several 10-foot by 10-foot plots should be established within the limit of work in areas where invasive species were removed.

Upon invasive species removal, the plots should be monitored by a wetland scientist each spring and fall over three consecutive years to determine percent dominance and percent cover of invasive species identified within the investigation area. The wetland scientist should take photographs at the same specified locations from a fixed point such that visual comparisons can be made during future monitoring events. After each monitoring event, proper documentation should be kept for reference and used for future monitoring and control of each site.

Table 17. Summary of Work to be Completed During Monitoring Efforts	
Visual Inspections	Inspect the restoration area for presence of potential impacts. Inspections will include the identification of wildlife damage, vegetative distress, and evidence of seeps, wetland impacts and surface water concerns, if present.
Invasive Species Monitoring	Monitor the restoration area for invasive species by evaluating established monitoring plots for the presence of more than 10% of invasive species.
Vegetation	Monitor of overall vegetation health including the requirement to maintain at least 90% vegetative cover.
Wildlife Habitat Functional Assessment	Evaluate the bio-stabilization techniques to determine the functional ability to provide wildlife habitat.
Stability Monitoring	Evaluate the stability of the bio-stabilization techniques including the presence of breaches, lack of vegetation, erosion, sloughing, or any other failures.

The following monitoring schedule has been established:

Table 18. Monitoring Schedule		
	Phase I	Phase II
Construction Period	Fall 2018 to Spring 2019	Fall 2019 to Spring 2020
Post-construction Monitoring	Summer/Fall 2019	Summer/Fall 2020
Year 1	Spring 2020, Fall 2020	Spring 2021, Fall 2021

Table 18. Monitoring Schedule		
Year 2	Spring 2021, Fall 2021	Spring 2022, Fall 2022
Year 3	Spring 2022, Fall 2022	Spring 2023, Fall 2023

At any time during the monitoring period, if 10% of invasive species or more are found within any plot, work should be conducted to remove all invasive species from the entire investigation area. Removal operations should be conducted by Town personnel and overseen by a trained wetlands scientist. If invasive species are found, all plant material including root mass, stolons, and rhizomes will be removed to prevent re-sprouting from occurring. This will be completed using hand tools. The vegetation will be placed inside plastic bags, so seeds do not spread to any non-impacted areas. When leaving the work area, all equipment and clothing used during removal must be cleaned to remove seed material before entering non-impacted areas.

The information gathered during the monitoring events should be incorporated into annual reports and completed at the end of 2020, 2021, and 2022 for Phase I and 2021, 2022, and 2023 for Phase II. The annual reports should then be submitted to the Conservation Commission. This report would detail invasive species identification, methods of invasive species control (if necessary), including the timing and frequency of control and the success of control methods, anticipated follow-up monitoring efforts, and photographs of monitoring plots.

Additional Items to Consider

In addition to the maintenance and monitoring protocols noted above, the Town should consider the use of a dumpster (or multiple) within the bathing beach area. If it is determined that dumpsters are preferred, they should be located in inconspicuous spots that are easily reached for weekly pickup. Several moveable trash and recycling receptacles should be located in the vicinity of the bathing beach entrances such that they are either easily accessed by DPW maintenance vehicles or trash bags are easily collected by bathing beach staff. Trash and recycling receptacles should be rolled in and rolled out at the beginning and end of the bathing beach season. All other waste generated outside of the bathing beach, such as dog waste, should be carried in and carried out. Signage at opportune locations along the reservoir's perimeter pathway should indicate to visitors that this policy prevails.

APPENDICES

APPENDIX A

MEETING NOTES

TO: Jon Marshall
FROM: Cheri Ruane, RLA & Cass Chroust, RLA
DATE: October 28, 2017
SUBJECT: Arlington Reservoir Master Plan Public Meeting #2 – October 26, 2017

ATTENDEES: Approximately 20 residents and community members
Jon Marshall, Director of Arlington Parks and Recreation
Lela Shepard, Arlington Conservation Agent
David White, Arlington Reservoir Committee
Ann LeRoy, Arlington Open Space Committee
Leslie Mayer, Arlington Community Preservation Committee
Don Vitters, Arlington Parks and Recreation Commission
Cheri Ruane, Cass Chroust, Weston & Sampson

NOTES:

1. When considering new plantings, consider shrubs with edible berries.
2. Wayfinding in the Res needs improved to help navigate the immediate and surrounding context. Signage in Lexington, MA was mentioned as a good precedent to follow.
3. Questions about a perceived reduction in water fowl at the Res were asked and the water was being lowered too much. The value of the Res as an environment that supports diverse water fowl was reiterated. It was also stated that an increase in invasive vegetation could have a negative impact on water fowl populations.
4. Fix the paths that are difficult to navigate due to the tree roots, but do not damage the trees. Possible solutions discussed included relocating the path and installing flexipave surfacing.
5. Several participants stated that the more “natural” trails around the Res were their favorite.
6. At the parking lot, a question was asked if permeable paving could be used similar to that recently installed at the nearby Drake Village.
7. Participants asked if the town could collaborate with Lexington to improve the interface between Ringe Park and the adjacent Res pathway.
8. Participants asked if a new playground could be more “natural”.
9. A safe crosswalk near the Lowell Street entrance would be great.
10. Participants brought up concerns about the use of chlorine in the swimming area and that the town should consider stopping its use of the chemical.

11. Better access to the water was requested for canoe/kayak launches in the warmer months and ice skating in the winter months.
12. Questions about how this plan will be funded and implemented were asked. The town is still determining how it will proceed, but will likely pursue CPA funding and Weston & Sampson will also identify other potential funding sources.
13. It was mentioned that the town currently uses the existing parking area as a staging area and lay down area for downed trees and snow removal. Once the parking lot is improved, however, this will need to be reconsidered.

MEETING NOTES

TO: Jon Marshall
FROM: Cheri Ruane, RLA & Cass Chroust, RLA
DATE: October 28, 2017
SUBJECT: Arlington Reservoir Master Plan Public Meeting #2 – October 26, 2017

ATTENDEES: Approximately 20 residents and community members
Jon Marshall, Director of Arlington Parks and Recreation
Lela Shepard, Arlington Conservation Agent
David White, Arlington Reservoir Committee
Ann LeRoy, Arlington Open Space Committee
Leslie Mayer, Arlington Community Preservation Committee
Don Vitters, Arlington Parks and Recreation Commission
Cheri Ruane, Cass Chroust, Weston & Sampson

NOTES:

1. When considering new plantings, consider shrubs with edible berries.
2. Wayfinding in the Res needs improved to help navigate the immediate and surrounding context. Signage in Lexington, MA was mentioned as a good precedent to follow.
3. Questions about a perceived reduction in water fowl at the Res were asked and the water was being lowered too much. The value of the Res as an environment that supports diverse water fowl was reiterated. It was also stated that an increase in invasive vegetation could have a negative impact on water fowl populations.
4. Fix the paths that are difficult to navigate due to the tree roots, but do not damage the trees. Possible solutions discussed included relocating the path and installing flexipave surfacing.
5. Several participants stated that the more “natural” trails around the Res were their favorite.
6. At the parking lot, a question was asked if permeable paving could be used similar to that recently installed at the nearby Drake Village.
7. Participants asked if the town could collaborate with Lexington to improve the interface between Ringe Park and the adjacent Res pathway.
8. Participants asked if a new playground could be more “natural”.
9. A safe crosswalk near the Lowell Street entrance would be great.
10. Participants brought up concerns about the use of chlorine in the swimming area and that the town should consider stopping its use of the chemical.

11. Better access to the water was requested for canoe/kayak launches in the warmer months and ice skating in the winter months.
12. Questions about how this plan will be funded and implemented were asked. The town is still determining how it will proceed, but will likely pursue CPA funding and Weston & Sampson will also identify other potential funding sources.
13. It was mentioned that the town currently uses the existing parking area as a staging area and lay down area for downed trees and snow removal. Once the parking lot is improved, however, this will need to be reconsidered.

MEETING NOTES

TO: Jon Marshall
FROM: Cheri Ruane, RLA & Cass Chroust, RLA
DATE: December 6, 2017
SUBJECT: Arlington Reservoir Master Plan Public Meeting #3 – November 30, 2017

ATTENDEES: 25 residents and community members

Jon Marshall, Director of Arlington Parks and Recreation

Lela Shepard, Arlington Conservation Agent

Nathaniel Stevens, Arlington Conservation Commission

David White, Arlington Reservoir Committee

Ann LeRoy, Arlington Open Space Committee

Don Vitters, Leslie Mayer, Jen Rothenberg, Shirley Canniff, Crissy Tarantino, Elena

Barthalemew, Arlington Parks and Recreation Commission

Cheri Ruane, Cass Chroust, Jim Riordan & Mark Mariano, Weston & Sampson

NOTES:

1. Jennifer from P&R Commission asked if we could consider relocating the pump house and / or combining the bathhouse / concession building with the mechanical room. Additionally, several meeting participants suggested relocating the water treatment building. W&S will consider alternatives to do this and approximate cost. One suggestion was to add the treatment system to an auxiliary part of the bathhouse.
2. There is clarity needed about dog regulations on the Arlington land that is within the Town of Lexington as the two towns have different rules.
3. There are a lot of bags of picked up dog feces around the playground because there are no trash cans nearby, can more trash receptacles be added and can pick up be more frequent? A dog waste station was also suggested with the potential for it to be maintained by a dog advocacy group.
4. Questions about the water quality of the Res (outside of the bathing beach) were asked and answered noting the number of algae and invasive species of plants that were found in the Res reducing visibility to a sub-optimal level. Operational techniques for ongoing management will be recommended to improve water quality as part of the master plan. This will include nonpoint source pollution mitigation at the outfalls around the Reservoir.

5. Discussion about the trail around the Res confirmed that people do not want asphalt and understand that stone dust is not maintainable by the DPW. Flexi-Pave is being used by Cambridge and will be reviewed by interested attendees as a potential surfacing.
6. The bathing beach at the Res is an intensely used community resource for residents with 11,500 day tags sold and another 800 season passes sold last year for swimming. It is also a revenue generator, which is an important consideration. The mechanical equipment is well beyond its prime and failed 12 times last season requiring emergency repairs. This is only expected to worsen. Minor repairs at this point may prolong the life of the system for short period of time, but ultimately the entire system must be removed and replaced.
7. DPW currently uses parts of the park for snow stockpiling and materials (e.g., aggregate) storage. Once the facilities are upgraded, these practices will need to be discontinued. Participants questioned where this necessary stockpiling and storage will be done instead.
8. Questions about the proposed filtration improvements were asked and answered. UV Light will supplement other filtration as well lower concentrations of chlorine. The system will be far more efficient and require less manpower to operate.
9. The parking lot was discussed at length. Currently there is no formal layout which decreases safety and control but increases the parking capacity by about 15-18 cars. A lot that is paved (with a pervious material) and striped would accommodate less cars than are currently able to be fit in (about 54 currently with about 36 proposed in the new layout). Concerns about this reduction were raised. W&S to see if additional spots can be fit in along the road or further into the site where the turnaround is located.
10. Participants asked that W&S consider the need for pedestrian safety practices and other traffic controls (e.g., speed bumps) though this is outside the scope of the work.
11. Participants asked about the possibility of relocating staff parking (e.g., "over by the field").
12. A new boat ramp may be relocated to provide more optimal access for personal non-motorized craft as well as water chestnut harvesting equipment.
13. Access to the playground from the beach is incredibly important to the families that use the beach on a regular basis. However, at the end of the day, when the beach is closed, the gates are locked and the playground is inaccessible to the general public. A control system that would allow for access to the play area when the beach is closed is being considered.
14. Exotic invasive vegetation will be managed through the Master Plan.
15. Participants discussed the possibility of creating a maintenance plan as a CPA grant.

MEETING NOTES

TO: Jon Marshall
FROM: Cheri Ruane, Cassie Bethoney
DATE: April 16, 2018
SUBJECT: Arlington Reservoir Master Plan Public Meeting #4 – April 3, 2018

ATTENDEES: roughly 25 residents and community members
Jon Marshall, Director of Arlington Parks and Recreation
David White, Arlington Reservoir Committee
Ann LeRoy, Arlington Open Space Committee
Leslie Mayer, Arlington Community Preservation Committee
Don Vitters, Arlington Parks and Recreation Commission
Cheri Ruane and Cassie Bethoney, Weston & Sampson

NOTES:

1. Once CPA funds have been approved, it is easier to seek other funding using CPA as a match. A similar situation is happening at Spy Pond.
2. There was some discussion on the parking lot and as to why so many spots were included (50 spots). The parking lot material is proposed as permeable asphalt, which would need to be commercially vacuum swept annually in order to maintain permeability over time. However, the design team discussed the incorporation of a redundant drainage system that would collect any additional water flowing during major storm events or if the asphalt failed in the future.
3. Companies sponsor staff outings to remove water chestnuts from the reservoir, which is helpful, but not a long-term solution. The design team discussed the method by which regular maintenance at two strategic moments during the season before seeds drop will work to remove the water chestnut issue from the water body over time.
4. Clarification was given about the trail that is proposed to run along the top of the berm separating the bathing beach from the Res. This pathway is currently overgrown and three feet wide, if that in places. A new stone dust pathway would be five feet wide and connect to the overall trail pathway system such that people would no longer need to leave the park and walk along Lowell Street in order to walk the entire perimeter trail. A resident noted that Arlington High School's cross country ski team makes use of the trails during the winter and would benefit from not having to ski along Lowell Street.
5. Discussion about the flexi-pave system, how it performs, and how it interfaces with adjacent materials along the trail. The flexi-pave system is not only pervious, but it provides an accessible

and inclusive surface that will allow people of all abilities to traverse the areas along the trail that have the most extreme protrusion of tree roots and difficult conditions to walk over.

6. There was a call for more bike parking, with space allocated for hitching trailers that connect to the back of the bike.
7. Wayfinding for bikes and pedestrians was also important to attendees. It would be helpful to point toward nearby bike trail or walking path connections and signs from Minuteman bike path. Eliminate the existing signage that is not serving the public sufficiently.
8. A question was raised about the use of black vinyl chain link fence and if there is any potential along Lowell Street to incorporate a more visually appealing stretch of fence. The black vinyl chain link fence was selected for this project because of its low cost and low maintenance; however, the design team is open to the possibility of using a more decorative fence strategically in places.
9. Traffic calming measures are underway along Lowell Street as part of a separate project. Those plans are being coordinated with this master plan for the Res, but the work is out of this scope.
10. The nature, materiality and purpose of the terraced seating was discussed.
11. A tentative timeline for Phase 1 was discussed. If approved at Town Meeting, design and engineering for Phase 1 can begin shortly after July 1, 2018. Construction would begin after the 2018 summer season and conclude in early to mid-spring of 2019 in anticipation of the summer 2019 beach season. Trail construction would be coordinated such that it happens in the least disruptive manner possible. The beach will be open this summer (2018) as well, so long as the pump equipment is operational for a final year.
 - a. All permitting required to complete Phase 1 would be sought in a timely manner during the Phase 1 design process (including such permits as filing an NOI to the Lexington and Arlington Conservation Commissions).
12. The Town of Lexington has been consulted on this master plan throughout the process.
13. Note that Busa Farm is named 'Lexington Community Farm'.
14. Discussion about beach pass fees. All money collected from these fees go to a recreation enterprise fund and are reinvested into Arlington Parks and Recreation.

APPENDIX B

From: bausman@rcn.com
To: [Chroust, Cassidy](#)
Subject: Arlington Res
Date: Friday, October 27, 2017 12:24:57 PM

Hi Cass,

I am a local neighbor who hasn't been to any of the Arlington Res meetings but wanted to chime in with my thoughts! My kids are now 18 and 20 and pretty much grew up going to the Res year-round. Once they were in middle and high school I often thought that there should be a basketball court. The underutilized parking lot near the climbing structure seems to be a perfect fit for this! I could see the older kids using it year round.

otherwise, i think many of my other comments have been addressed (I just looked through the slide show).

Thanks! Ann Bausman 148 Westminster Ave

From: Jon Marshall
To: [Chroust, Cassidy](#)
Subject: Fwd: Re: Reservoir Beach Public Input Meeting 10/26/2017
Date: Friday, October 27, 2017 8:51:43 AM

Cass-

FYI Res Feedback.

Jon Marshall
Director of Recreation
Town of Arlington
781 316-3880
arlingtonma.gov/recreation

-----Original Message-----

From: "Rec Office" <RecOffice@town.arlington.ma.us>
To: "Jon Marshall" <JRMarshall@town.arlington.ma.us>
Date: Fri, 27 Oct 2017 08:42:27 -0400
Subject: Fwd: Re: Reservoir Beach Public Input Meeting 10/26/2017

-----Original Message-----

From: Carolina San Miguel <carolsanmiguel@yahoo.com>
To: Arlington Recreation <recoffice@town.arlington.ma.us>
Date: Thu, 26 Oct 2017 22:17:00 +0000 (UTC)
Subject: Re: Reservoir Beach Public Input Meeting 10/26/2017

Hi,

I'm a resident at Arlington Heights and also an architect and urban planner. I won't be able to make it for the public town meeting tonight for suggestions on the reservoir but i do have many and would like to be engaged in this.

I'm doing my doctoral research on better strategies for implementing child friendliness in neighborhoods. I use the reservoir a lot, and from my experience, perception and background, I think we are missing more family friendly swimming places for all ages and along the entire year, specially in winter. Boston, Somerville, Cambridge, have public swimming pools and even Lexington has the pools that you pay 5 bucks but we don't. And we should. I feel like an all season water park would be something to consider for the town.

For the reservoir specifically, it should be open longer, start earlier and close later. It should also have water fountain to drink, like the Lexington reservoir. It should have at least 2 showers inside. It's great for kids but not so good for elderly or adults to swim, the Lexington one is better to swim, so I fell like it should be extended, made bigger for that too, it's a rather small pool.

I think instead of having just one night in September for adults it should be more open to all ages, and promote town sports events, music (already implemented, I know), have a snack/restaurant for night events, for example, with nice local musicians have the possibility to do private events, like weddings, or something, to fund raise, along the year, have day family days over fall and winter and turn the reservoir into an ice

skating ring in winter.

Got a couple of more suggestions so if you need we can find a time and I can meet you guys and help collaborate. Would love to. I have tons of pictures of the reservoir from all times of the year too!

Thanks a lot and good luck at the meeting tonight.

Warmly,

Carolina San Miguel

Co-Founder, Brazil GSD
Doctoral Candidate, Harvard Graduate School of Design
Teaching Fellow, Department of Architecture, Harvard GSD
Innovation Capacity Strategist, Harvard Center on the Developing Child

MAS Housing ETH. MA Strategic Design IED.
BA Architecture & Urbanism CAU-MG Brazil

+ 1 781 353 1797 (USA)
+ 55 31 98981 7888 (BRA)

csanmiguel@gsd.harvard.edu

Em qua, 18/10/17, Arlington Recreation
<arlingtonrec.com@myrecdepartment.com> escreveu:

Assunto: Reservoir Beach Public Input Meeting 10/26/2017
Para: "Carolina San Miguel" <carolsanmiguel@yahoo.com>
Data: Quarta-feira, 18 de Outubro de 2017, 15:11

Recreation Department Invoice

422 Summer Street, Arlington, MA. 02474 •
781-316-3880 • <http://www.arlingtonrec.com/>

We
need your input! Help Arlington plan the future of the
Arlington Reservoir. Come to the public input session
Thursday, October 26 6:30pm at Arlington Town Hall
Auditorium.
Click [HERE](#) for more
information.

Sent to: San
Miguel account at carolsanmiguel@yahoo.com

To Opt out of our email list please click
here to unsubscribe

From: Jon Marshall
To: [Chroust, Cassidy](#)
Subject: Fwd: Reservoir Plans
Date: Thursday, October 26, 2017 3:35:46 PM

Cass-

Here is some feedback. I let her know where she could go for her detailed response.

Thanks,

Jon Marshall
Director of Recreation
Town of Arlington
781 316-3880
arlingtonma.gov/recreation

-----Original Message-----

From: "Rec Office" <RecOffice@town.arlington.ma.us>
To: "Jon Marshall" <JRMarshall@town.arlington.ma.us>
Date: Thu, 26 Oct 2017 13:30:26 -0400
Subject: Fwd: Reservoir Plans

-----Original Message-----

From: strutnpuppy@gmail.com
To: RecOffice@town.arlington.ma.us
Date: Thu, 26 Oct 2017 11:06:24 -0400
Subject: Reservoir Plans

Hi guys!

What is the plan for the Res? I can't make the meetings but wanted to send in my suggestions. I would love a detailed response about what is planned too.

My suggestions -

- 1) keep it on-leash all the way around all the time
- 2) open the beach on Memorial Day and close it on Labor Day
- 3) get rid of the weed garden on the side near Hurd Field. It just becomes overgrown with weeds and tall grass.
- 4) add more trash receptacles for dog owners and other litter
- 5) ban fishing

Thanks!
Daria

Daria Pannesi
Chief Tail Wagger
www.strutnpup.com
Facebook.com/StrutnPup

From: Jon Marshall
To: [Chroust, Cassidy](#)
Subject: Fwd: Res project feedback
Date: Monday, November 27, 2017 9:12:06 AM

Cass-

FYI.

Jon Marshall
Director of Recreation
Town of Arlington
781 316-3880
arlingtonma.gov/recreation

-----Original Message-----

From: "Rec Office" <RecOffice@town.arlington.ma.us>
To: "Jon Marshall" <JRMarshall@town.arlington.ma.us>
Date: Mon, 27 Nov 2017 09:09:17 -0500
Subject: Fwd: Res project feedback

-----Original Message-----

From: John Fitzpatrick <jdfitzlaw@gmail.com>
To: RecOffice@town.arlington.ma.us
Date: Wed, 22 Nov 2017 08:19:16 -0500
Subject: Res project feedback

The Res, despite its advertised impeccable water quality, looks like a mud puddle. It is not an inviting place to take your family for a swim. I never once used it while raising my family here, and instead belonged to a private pool club in Belmont. By contrast, I suspect I'm not the only Arlingtonian who's a tad jealous when I drive by Belmont's impressively rebuilt, shiny new municipal pool complex on summer days, always crowded with families out for a swim. On the other hand, though the Res does not seem heavily used, if its annual cost is minimal, that may be an acceptable trade off. The ultimate cost/benefit question is whether it is worthwhile to invest in creating a more attractive swimming facility for the Town, and if so, how much will it cost? If Arlington wants to continue renewing itself by attracting young families, a family friendly swimming spot should be on its capital improvement to-do list. Also favoring such an investment is Arlington's size. Though we still function as a Town, we really have the population of a small city. Given our size, having a decent municipal swimming place may not be a necessity, but it would at least be seen as a reasonable expectation.

Thanks for soliciting public input, and good luck making the right call!

John Fitzpatrick
Foxmeadow Lane (Turkey Hill)

Sent from my iPhone

From: Jon Marshall
To: [Chroust, Cassidy](#)
Subject: Fwd: comments for REs Master Plan
Date: Wednesday, November 8, 2017 11:57:15 AM

Cass-

Some feedback.

Jon Marshall
Director of Recreation
Town of Arlington
781 316-3880
arlingtonma.gov/recreation

-----Original Message-----

From: "Rec Office" <RecOffice@town.arlington.ma.us>
To: "Jon Marshall" <JRMarshall@town.arlington.ma.us>
Date: Wed, 08 Nov 2017 08:56:21 -0500
Subject: Fwd: comments for REs Master Plan

-----Original Message-----

From: Susan Hargrave <suahargrave@gmail.com>
To: RecOffice@town.arlington.ma.us
Date: Wed, 8 Nov 2017 08:23:24 -0500
Subject: comments for REs Master Plan

Hello,

I'm sorry that I will not be able to attend the meetings. I live near the reservoir, and go there frequently. Here are a few comments:

I would like to see swimming water free of debris: can't the lifeguards use nets (like used for swimming pools) to remove feathers, grass, leaves, and other debris? They always seem to be raking the sand, but I can't figure out why.

I would like to see the swimming area open at least until Labor Day; that's a great time for people to go somewhere local and not face the highway traffic, and it's always hot.

I would like to see the parking lot repaired. It would be nice to use the asphalt-type material they use at Walden Pond, which allows rain water to seep through to the ground below.

I would like to see the fence maintained or removed where not needed.

I noticed the other day I noticed that people had picked up their dogs' poop but had nowhere to put it. One of the planters near the picnic area was filled with little bags of poop.

I would like to see the wooden Res sign/map fixed. It's probably years 20 years since it was damaged. It makes it look like no one is taking care of the Res.

On the side of the Res near the farm, it would be nice to use wood chips

to cover the roots on the path. This has been done in some years but not others.

I realize that the invasive weeds are a challenge, but I would like to see them gone. If Lexington is the problem, perhaps Arlington needs to think up strategies to encourage them to do their share of the work.

Thank you.

Susan Hargrave
170 Lowell Street

From: Jon Marshall
To: [Bethoney, Cassie](mailto:Cassie.Bethoney@town.arlington.ma.us)
Subject: Fwd: The Res
Date: Tuesday, April 3, 2018 11:33:48 AM

Cassie-

See below.

Jon Marshall
Director of Recreation
Town of Arlington
781 316-3880
arlingtonma.gov/recreation

-----Original Message-----

From: "Rec Office" <RecOffice@town.arlington.ma.us>
To: "Jon Marshall" <JRMarshall@town.arlington.ma.us>
Date: Tue, 03 Apr 2018 09:27:09 -0400
Subject: Fwd: The Res

-----Original Message-----

From: Oakes Plimpton <opoakes@gmail.com>
To: RecOffice@town.arlington.ma.us
Cc: "David E. White" <dwhite@gilbertwhite.com>, Karsten Hartel <karstenehartel@gmail.com>, Keith Ohmart <kohmart@verizon.net>, Jane Howard <phoward795@horizon.com>, Catherine Garnett <cgarnett251@gmail.com>, Mike Tabacynski <mjtspam4@gmail.com>, Donald Miller <donaldbmiller@comcast.net>, Ann LeRoy <annleroyer12@gmail.com>
Date: Tue, 3 Apr 2018 08:44:18 -0400
Subject: The Res

Master Plan comments: I like to walk around the Res for an outing and to bird watch. I wish that the Res paths, especially the berm trail, remain open during the Spring and the Fall. It often closes in the Fall as I remember. Sorry, I object to the visual pollution of the blue signs around the Res promoting the Colonial Hat of Lexington with the single word ACROSS on it. The Colonials clear cut the forests and killed all the wildlife. I would have no objection to a green sign indicating the Res Path is part of the Across Lexington trail system (with a graphic of Will Lang!) (or a boy or girl with pack).

The other problem is that the ACROSS signs do not indicate direction. There should be a sign indicating the first trail to the left on the NW side of the Res goes to the Cataldo Reservation and the Bike Path, and that the 2nd trail to the left just before you come to the outlet of the brook goes to public streets (follow signs to Great Meadows park). Then after the brook there is a short steep trail to the left which you could take to walk along the edge of the woods to go to Silk Fields where goats and Alpacas are to be looked at (public invited). Pat and I did so last Saturday (talked with attendant). Then further along comes Lexington Community Farm. There should be a sign where the view is unblocked by bushes to indicate same (look but do not enter).

I would be game to contribute towards the artistic and professional rendering of the signs described above. I hope to come to the meeting tonight.

Oakes Plimpton

ps: Who decides on the lowering and rising of the water in the Res?? Should include a conservation / wildlife representative. I noticed a lot of those water chestnut barbs on the sand bar. We saw Buffleheads, Ring-necked Ducks, Black Ducks, Green-winged Teals, Killdeer, Mallards and Canada Geese of course on Saturday, Red-winged Blackbirds three weeks ago! Below (sample of replacement for Colonial Hat!)

O.P.



APPENDIX C

ARLINGTON RESERVOIR MASTER PLAN

WALKABOUT GUIDE

please answer as you see fit

Activities and facilities that would improve Arlington Reservoir

include: healthy food offerings, more tables for lunch, move
changing rooms, spray park 5 yr old says - water slide and
water playground

The best things about Arlington Reservoir are: _____

the scale for little kids, neighborhood feel

I wish Arlington Reservoir had more: cleaner bathrooms, changing

space / tables for babies, hours in summer - season ends too
early.

I wish Arlington Reservoir had less: queues!

What is missing in Arlington Reservoir? _____

a full summer schedule, lunch options

CONTACT INFORMATION (optional): EKM
powers.lawler@gmail.com

Please leave this guide at the workstation where you picked up your clipboard. If you think of more to say later, please visit:

<http://www.arlingtonma.gov/departments/recreation/capital-projects>

<http://arlingtonreservoir.org/reservoir-master-plan/>

ARLINGTON RESERVOIR MASTER PLAN WALKABOUT GUIDE

please answer as you see fit

Activities and facilities that would improve Arlington Reservoir include: BETTER WALKING PATHS & MAINTENANCE -

SOLVE THE INVASIVE PROBLEM

The best things about Arlington Reservoir are: _____

HARPY GARDEN, WILDLIFE ABUNDANT, WALKING TRAILS

I wish Arlington Reservoir had more: _____

TRAIL MAINTENANCE; INFORMATION ON WILDLIFE VIEWING OPPORTUNITIES - I.E. LOOKOUT & OBSERVATION VIEWPOINTS

I wish Arlington Reservoir had less: _____

INVASIVE PLANT SPECIES; VOLUNTEERS - TRAIL MAINTENANCE & VISION 2020 COMMITTEE

What is missing in Arlington Reservoir? _____

PUBLIC ART & RECOMMENDED WILDLIFE VIEWING STATIONS (I.E. BEST PLACE TO VIEW)...

CONTACT INFORMATION (optional): _____

Please leave this guide at the workstation where you picked up your clipboard. If you think of more to say later, please visit:
<http://www.arlingtonma.gov/departments/recreation/capital-projects>
<http://arlingtonreservoir.org/reservoir-master-plan/>

ARLINGTON RESERVOIR MASTER PLAN

WALKABOUT GUIDE

please answer as you see fit

Activities and facilities that would improve Arlington Reservoir

include: better trail maintenance + invasive control
water chestnuts cleared out (nutweed, bittersweet)

The best things about Arlington Reservoir are: natural resources

non-landscaped feeling - trail, garden
birds + wildlife activity

I wish Arlington Reservoir had more: maintenance

volunteers for Habitat garden work

I wish Arlington Reservoir had less: invasive plants

What is missing in Arlington Reservoir? public art + activities

CONTACT INFORMATION (optional): Ann LeRoy
annleroyer12@gmail.com

Please leave this guide at the workstation where you picked up your clipboard. If you think of more to say later, please visit:
<http://www.arlingtonma.gov/departments/recreation/capital-projects>
<http://arlingtonreservoir.org/reservoir-master-plan/>

ARLINGTON RESERVOIR MASTER PLAN

WALKABOUT GUIDE

please answer as you see fit

Activities and facilities that would improve Arlington Reservoir include: Bigger swim area.

The best things about Arlington Reservoir are: Swimming!

I wish Arlington Reservoir had more: sand in the swimming area - the pond bottom is slimy.

I wish Arlington Reservoir had less: ~~stuff~~ less stuff floating on the pond like leaves and feathers. Please skim the water better

What is missing in Arlington Reservoir? please keep it open for swimming thru Labor Day and keep it open later in the evening in June and July - People who work 9-5 would appreciate later hours when it is light out. It used to be open until 8pm.

CONTACT INFORMATION (optional): Mary McCartney
Marymccartney@yahoo.com.

Please leave this guide at the workstation where you picked up your clipboard. If you think of more to say later, please visit:
<http://www.arlingtonma.gov/departments/recreation/capital-projects>
<http://arlingtonreservoir.org/reservoir-master-plan/>

ARLINGTON RESERVOIR MASTER PLAN

WALKABOUT GUIDE

please answer as you see fit

Activities and facilities that would improve Arlington Reservoir

include: Not really an activity, but reducing the erosion on the
paths (such as path from habitat garden to Mud field) and
clearing invasives on shoreline and in Res itself.

The best things about Arlington Reservoir are: habitat garden, path,
bench, open-space

I wish Arlington Reservoir had more: Funds to restore and protect
natural area around Res, paths, trees and shrubs.

I wish Arlington Reservoir had less: _____

What is missing in Arlington Reservoir? Not much! I love having the
Res in Arlington.

CONTACT INFORMATION (optional): Lfredman1@gmail.com

Please leave this guide at the workstation where you picked up your clipboard. If you think of more to say later, please visit:

<http://www.arlingtonma.gov/departments/recreation/capital-projects>

<http://arlingtonreservoir.org/reservoir-master-plan/>

ARLINGTON RESERVOIR MASTER PLAN

WALKABOUT GUIDE

please answer as you see fit

Activities and facilities that would improve Arlington Reservoir include: I like the new plantings

Bridge improvements.

The best things about Arlington Reservoir are: Nature, birds
walking trails, Willow Tree,

I wish Arlington Reservoir had more: year round
access

I wish Arlington Reservoir had less: I do not use
swimming beach and think we could
do without it. if there were
other options for little kids in summer

What is missing in Arlington Reservoir? _____

CONTACT INFORMATION (optional): _____

Please leave this guide at the workstation where you picked up your clipboard. If you think of more to say later, please visit:
<http://www.arlingtonma.gov/departments/recreation/capital-projects>
<http://arlingtonreservoir.org/reservoir-master-plan/>

ARLINGTON RESERVOIR MASTER PLAN

WALKABOUT GUIDE

please answer as you see fit

Activities and facilities that would improve Arlington Reservoir include: _____

The best things about Arlington Reservoir are: Shade & grass on beach.
Beautiful path to walk on. Especially "nature-pati" part over by
Busa farm.

I wish Arlington Reservoir had more: Available beach hours in summer
(stay open later), and a longer open season. (swim at your own
risk is fine - works for entire Atlantic Ocean).

I wish Arlington Reservoir had less: GEESE on the beach. Scum in
the water. Closing off beach area for several weeks before/after swim
season allows them to settle in. Better water filter needed.
FAVOR STAY BY PLOT.

What is missing in Arlington Reservoir? _____

CONTACT INFORMATION (optional): _____

Please leave this guide at the workstation where you picked up your clipboard. If you think of more to say later, please visit:
<http://www.arlingtonma.gov/departments/recreation/capital-projects>
<http://arlingtonreservoir.org/reservoir-master-plan/>

ARLINGTON RESERVOIR MASTER PLAN

WALKABOUT GUIDE

please answer as you see fit

Activities and facilities that would improve Arlington Reservoir

include: full use during summer season

The best things about Arlington Reservoir are: loop path

I wish Arlington Reservoir had more: Trash cans, Plantings
for banks

I wish Arlington Reservoir had less: Trash, Washed out banks

What is missing in Arlington Reservoir? More seating and
easier access to water

CONTACT INFORMATION (optional): laura.b@wisner.org

Please leave this guide at the workstation where you picked up your clipboard. If you think of more to say later, please visit:

<http://www.arlingtonma.gov/departments/recreation/capital-projects>

<http://arlingtonreservoir.org/reservoir-master-plan/>

ARLINGTON RESERVOIR MASTER PLAN

WALKABOUT GUIDE

please answer as you see fit

Activities and facilities that would improve Arlington Reservoir

include: improve all here -
there is basketball across the Res - no additional

The best things about Arlington Reservoir are: seats, paths,
green, green, green

I wish Arlington Reservoir had more: mulch around
the walk path surrounding pond

I wish Arlington Reservoir had less: invasive weed in
pond

What is missing in Arlington Reservoir? more climbing
stuff for kids / adults

CONTACT INFORMATION (optional): Lu Leveille
lnleveille1@gmail.com

Please leave this guide at the workstation where you picked up your clipboard. If you think of more to say later, please visit:

<http://www.arlingtonma.gov/departments/recreation/capital-projects>

<http://arlingtonreservoir.org/reservoir-master-plan/>

ARLINGTON RESERVOIR MASTER PLAN

WALKABOUT GUIDE

please answer as you see fit

chroust@wseinc.com

Activities and facilities that would improve Arlington Reservoir

include: splash pad!! waterslide (suggested by my children)

The best things about Arlington Reservoir are: swimming area,
nature path

I wish Arlington Reservoir had more: picnic benches, sand,
(music) concerts, regularly organized, ie Sunday night,
community event

I wish Arlington Reservoir had less: dog poop ☹️

What is missing in Arlington Reservoir? longer swim season, more boating opportunities

CONTACT INFORMATION (optional): _____

Please leave this guide at the workstation where you picked up your clipboard. If you think of more to say later, please visit:

<http://www.arlingtonma.gov/departments/recreation/capital-projects>

<http://arlingtonreservoir.org/reservoir-master-plan/>

ARLINGTON RESERVOIR MASTER PLAN

WALKABOUT GUIDE

please answer as you see fit

Activities and facilities that would improve Arlington Reservoir

include: Better walking options especially in
summer when beach is closed off.

The best things about Arlington Reservoir are: natural environment
walking paths

I wish Arlington Reservoir had more: benches

I wish Arlington Reservoir had less: invasive plants
land & water

What is missing in Arlington Reservoir? shoreline access
boat launch

CONTACT INFORMATION (optional): _____

Please leave this guide at the workstation where you picked up your clipboard. If you think of more to say later, please visit:

<http://www.arlingtonma.gov/departments/recreation/capital-projects>
[tp://arlingtonreservoir.org/reservoir-master-plan/](http://arlingtonreservoir.org/reservoir-master-plan/)

ARLINGTON RESERVOIR MASTER PLAN WALKABOUT GUIDE

please answer as you see fit

Activities and facilities that would improve Arlington Reservoir include: More goose deterrents, larger swim area, better SNACK BAR.

The best things about Arlington Reservoir are: shade, beach, woods

I wish Arlington Reservoir had more: Off-leash hours, larger swimming area.

I wish Arlington Reservoir had less: Goose poo

What is missing in Arlington Reservoir? Better SNACK BAR, maybe with tables and ice cream

CONTACT INFORMATION (optional): AllyMUNGENAST@yahoo.com

Please leave this guide at the workstation where you picked up your clipboard. If you think of more to say later, please visit:
<http://www.arlingtonma.gov/departments/recreation/capital-projects>
<http://arlingtonreservoir.org/reservoir-master-plan/>

ARLINGTON RESERVOIR MASTER PLAN

WALKABOUT GUIDE

please answer as you see fit

chroustc@wseinc.com

Activities and facilities that would improve Arlington Reservoir include: Walking, walking, walking

The best things about Arlington Reservoir are: A bit of nature in a densely developed community/region

I wish Arlington Reservoir had more: ⊕

I wish Arlington Reservoir had less: ⊕ signs (1 sign in the parking lot should get folks to website)

What is missing in Arlington Reservoir? Maintenance on parking lot, path, lawn.

CONTACT INFORMATION (optional): _____

Please leave this guide at the workstation where you picked up your clipboard. If you think of more to say later, please visit:
<http://www.arlingtonma.gov/departments/recreation/capital-projects>
<http://arlingtonreservoir.org/reservoir-master-plan/>

ARLINGTON RESERVOIR MASTER PLAN

WALKABOUT GUIDE

please answer as you see fit

Activities and facilities that would improve Arlington Reservoir

include: Clean enough water to take my
SUP in the water.

The best things about Arlington Reservoir are: Fall-Winter Walks

with Dog (beach open)
Summer + Spring Walks - dogs can get in Res to
Cool off - Also Cross Country Skiing in the winter!! Love it!!

I wish Arlington Reservoir had more: Wider paths

along Bwan Farm area

I wish Arlington Reservoir had less: Less rules about

Dogs ^{off} ~~on~~ leash at the beach areas - more time
for off leash

Please no snow plowing!! - Bad for Skiing.

What is missing in Arlington Reservoir? Naturalist Education

What birds can you see? What other wildlife here and
how to protect them. Little Nature Education stops
along the path

CONTACT INFORMATION (optional): Sharon Kabelitz

skabelitz112@gmail.com

Please leave this guide at the workstation where you picked up your clipboard. If you think of more to say later, please visit:

<http://www.arlingtonma.gov/departments/recreation/capital-projects>

<http://arlingtonreservoir.org/reservoir-master-plan/>

ARLINGTON RESERVOIR MASTER PLAN WALKABOUT GUIDE

please answer as you see fit

Activities and facilities that would improve Arlington Reservoir include: _____

The best things about Arlington Reservoir are: birds & path

I wish Arlington Reservoir had more: _____

I wish Arlington Reservoir had less: People sometimes coming
in the Reservoir, ~~with~~ except they take out the investive plant
would like to discourage the recreational usage

What is missing in Arlington Reservoir? _____

CONTACT INFORMATION (optional): _____

Please leave this guide at the workstation where you picked up your clipboard. If you think of more to say later, please visit:

<http://www.arlingtonma.gov/departments/recreation/capital-projects>

<http://arlingtonreservoir.org/reservoir-master-plan/>

ARLINGTON RESERVOIR MASTER PLAN

WALKABOUT GUIDE

please answer as you see fit

Activities and facilities that would improve Arlington Reservoir

include: MORE COMMUNITY EVENTS AT THE RES TO
BENEFIT IT AND BUILD RELATIONSHIPS

The best things about Arlington Reservoir are: COMMUNITY
INVOLVEMENT, FAMILY-FRIENDLY, VERY AFFORDABLE,
RECENTLY EXPANDED MENU AT THE SNACK SHACK

I wish Arlington Reservoir had more: IF I UNDERSTOOD MY
WIFE CORRECTLY, SHE WOULD SAY: SWIMMING
LESSONS FOR KIDS (FOR A FEE OF COURSE)

I wish Arlington Reservoir had less: COUNTLESS ROCKS
ON THE BEACH

What is missing in Arlington Reservoir? NOT MUCH AT ALL.
MAYBE A BABY CHANGING STATION IN BOTH TOILET
ROOMS, OR A COMMON SHOWER AREA FOR THE EXIT.

TOM MCGRAW

CONTACT INFORMATION (optional): thomasjmcgraw@gmail

Please leave this guide at the workstation where you picked up your clipboard. If you think of more to say later, please visit:

<http://www.arlingtonma.gov/departments/recreation/capital-projects>

<http://arlingtonreservoir.org/reservoir-master-plan/>

APPENDIX D

A Tour of the Arlington Reservoir



Arlington Reservoir Committee

Version 2 Spring 2003

THE ARLINGTON RESERVOIR

A greatly valued and much loved community resource.

*The initial motivation for this guide was the **Arlington Reservoir Art Project** – a collaborative effort between the Arlington Public Schools art program, the Arlington Center for the Arts (ACA) and the Arlington community, which took place in the fall of 2002.*

Through this program, the fifth grader students from several local schools explored the ecosystem of the Arlington Reservoir, as part of the art and science curriculum.

Wendy Campbell, art teacher in the Arlington Public Schools, was the primary organizer of this project. But many others volunteered and participated in numerous ways, including teachers, parents, grandparents, subject matter experts and other community members.

The Arlington Reservoir Art Project was funded by a grant from the Arlington Educational Enrichment Fund (AEEF), as well as by the Stratton and Bishop PTO's and library committees. Production of the booklet, "A Tour of the Arlington Reservoir," was funded by Arlington Vision 2020.

Table of Contents

<u>The Arlington Reservoir</u>	1
<u>Some Basic Facts</u>	1
<u>Let's Take a Walk Around!</u>	3
<u>A Map of Our Tour</u>	3
1. Reservoir Beach	3
2. Wooded area next to Lowell Street	4
3. Busa farmland.....	5
4. Munroe Brook area	5
5. More woods and marshy areas	6
6. Public park with grassy field	6
7. Houses on an embankment & mud flats	7
8. Path along Sickle Brook.....	8
9. Wetlands along Sickle Brook & Drake Village.....	8
10. Dam gate for Res outflow & Mill Brook start.....	9
11. Stump dump area above Hurd Field.....	10
12. Roadway and side path to Hurd Field	11
13. Parking area for the beach.....	12
<u>Reservoir Goals & Committee</u>	12
<u>Birds at the Arlington Reservoir</u>	14

The Arlington Reservoir

Many people in Arlington are familiar with the Reservoir or “the Res,” as it is also known. We can swim there in the summertime. But, the Res is much



more than a swimming beach! Let’s explore the Res and the many different environments and issues that make it a very special place in our town.

Some Basic Facts

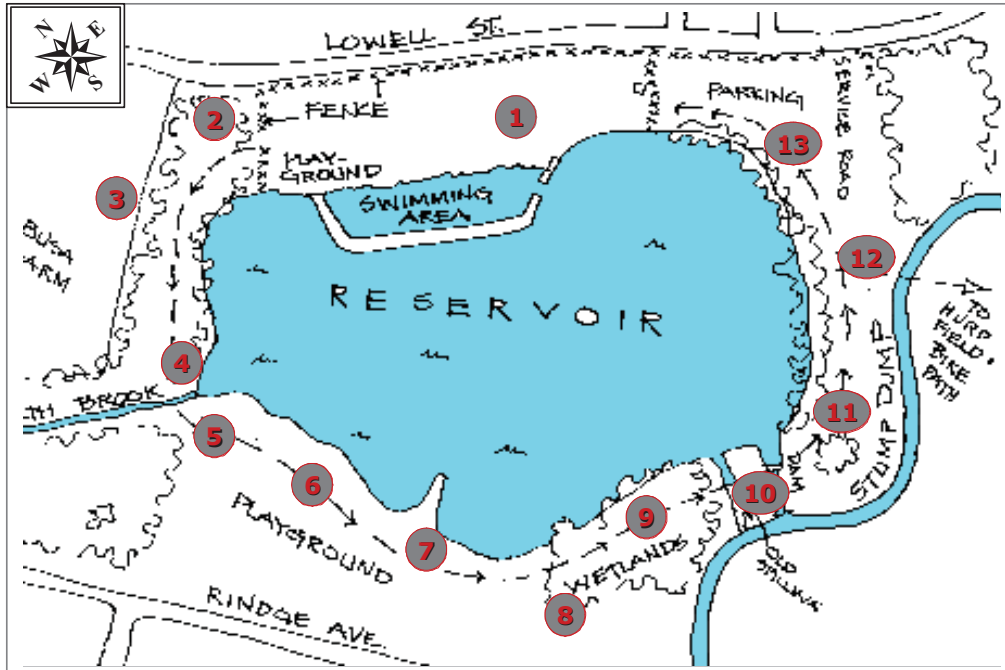
Did you know that...?

- *The actual swimming area is about 1½ acres, which is the size of almost 4 ice rinks.*
- *The total Reservoir water area is 28 acres, and that’s the size of almost 72 ice rinks or about 21 football fields (including the end zones).*
- *The water and land area around the Res, owned by Arlington, is 65 acres or a bit more than 49 football fields (about half of this is actually located in the town of Lexington).*

- *The watershed area draining into the Res is 1,120 acres (847 football fields!) and contains parts of both Arlington and Lexington.*
- *The Reservoir hasn't been used as a source of drinking water since the 1890's.*
- *The Res is part of the Mystic River watershed that drains into the Boston harbor.*
- *The Reservoir is a body of water that is actively managed by humans. Its depth is raised and lowered each season, and it is 6 feet higher in summer than the rest of the year. This helps to keep water in the swimming area.*
- *When the water is low, many mud flats are exposed and the deepest part of the Res near the dam is only 6 feet deep.*
- *The variation in the water level creates a very appealing habitat for a variety of birds in different seasons – nearly 150 species have been seen in the area!*
- *The Res acts as part of an avian flyway system. Migrating birds stop here on their way north in the spring and on their way back south again in the fall.*
- *Muskrats, turtles and several different kinds of fish, including Largemouth Bass and Bluegill, live in the Res.*

Let's Take a Walk Around!

The Arlington Reservoir is a place of great natural beauty. If you walk along the shoreline of the Res, you will find many habitats. Each of them is a special place with much to observe, as well as problems that we all need to understand and work to correct. Let's explore each of these areas and discuss some of the issues.



A Map of Our Tour

1. Reservoir Beach

Let's begin our tour at the beach itself. If you look around this area, you will see a space in nature that human beings have adapted for their use and needs. The beach area was first developed in 1935 and renovated to include the berm and water filtering equipment in 1983. Here you find a bathhouse, a playground, benches, picnic tables, a concrete walkway and handrail leading into the water, a berm that separates the swimming water from the rest of

the Res and equipment to clean and treat the water for swimmers. The berm is a favorite bird watching spot, after the beach is closed. The northern half of the beach is actually in Lexington.

Issues: You are probably most familiar with problems at the beach. Geese, ducks and dogs leave their droppings in the sand, grass, and water, making it very unpleasant for swimming and walking in bare feet. Ducks often try to steal your food when you picnic at the beach. People don't always use the trashcans, and the litter left behind is unattractive and can be hazardous. Chlorine is put into the swimming water to make it safe for swimming, and there is a filter to help keep the water clean, but it looks murky when bathers stir up the natural silt. Can you think of other problems that exist at the beach? Are there ways to correct these problems?

(Science Topics: Human impact on the environment, resource management, water chemistry, phosphorous cycle, & water quality testing)

2. Wooded area next to Lowell Street

As we walk out of the beach area, toward Lexington, we are following a trail that leads into a natural area of woods and brush. From the main walking trail, several trails lead uphill through the woods and out onto Lowell Street.

Issues: The woods near the road have been littered with trash that people have dumped there. Volunteers have helped to clean it out. Water run-off from the road has caused



erosion at the entrance to the trails. In this area, along Lowell Street, there are no or very poor sidewalks, making walking on Lowell Street unsafe. What ideas do you have for making this area better?

(Science Topics: Human impact, erosion, and infrastructure development)

3. Busa farmland



As the path that we are following turns to the left, you can see land that is used for farming, as it has been for many, many years. The Busa family owns this Lexington farmland, and after the fall harvest, many birds

like to gather in these fields to eat leftover seeds, other vegetation or insects.

Issues: Here the path can become overgrown by weeds, and tree roots are bare because of soil compaction and erosion. This can make walking difficult. In recent years, housing developers have been very interested in the farmland. Can you imagine how this area would change if houses were built on all or even some of the open space? What types of stress do buildings and pavement put on the environment?

(Science Topics: Erosion, human impact, and open space)

4. Munroe Brook area

Following further along the path, we see Munroe Brook, the major Reservoir water source. This area includes a path that goes about 1/4 mile



up the stream. It is a beautiful quiet natural area, and you can climb down along side the small arched bridge to watch the stream flow or water birds swimming and feeding.

Issues: The water that flows into the Reservoir here carries with it anything that flows into it from the roads, yards and fields upstream. Excess lawn and garden fertilizers, road salt and leaking oil are some of the contaminants that can pollute an urban watershed. Do you think people living upstream realize that what they do in their yards or on their streets can cause problems for the Res and the brooks?

(Science Topics: Human impact, watersheds, and water cycle)

5. More woods and marshy areas

Leaving the stream area, the path turns left and you are walking in a wooded area. The section on the left between the path and the Reservoir is marshland. Herons and other birds are known to hide among the taller grasses and cattails in this part of the Res.



Issues: Poison ivy grows in the overgrown areas beside the trail. Do you know how to recognize the poison ivy plant? Do you know what can happen if you touch the poison ivy plant? Watch out for it along other parts of the path, as well.

(Science Topics: Human interaction, plant defenses and adaptations)

6. Public park with grassy field

As you emerge from the woods, you find yourself in an open grassy space that's great for running around or spreading a blanket and enjoying a picnic. This is the

Rindge Avenue playground, located in Lexington. If you walk to the bench near the edge of the water, you will see a broken storm drain and soil erosion.

Issues: Most of the Reservoir water comes from Munroe Brook, but when it rains a lot of water from street drains also flows into the Res. This storm water can bring along a lot of trash and dirt from the streets. Is there anything that can be done to prevent this from happening?

(Science Topics: Water cycle, watershed and human impact)

7. Houses on an embankment & mud flats

Just beyond the park on the right of the path, houses are built on a slope overlooking the Res. What a lovely view! When the water level is low, the mudflats to the left attract certain types of birds, and visitors can walk out onto the peninsula opposite the beach area.

Issues: If you look out over the water in late spring and throughout the summer, you will likely see plants growing on the water. This is the invasive water chestnut weed, which is very bad for the Reservoir because it prevents sunlight from getting into the water and reduces the level of much-needed oxygen. And it isn't even considered good food by the



birds! You may have seen the seedpods that line the shore. They are dark and very hard with sharp spikes that really hurt if you step on them! The Arlington Conservation Commission hired a contractor with special harvesting machines to remove the weeds from the water. The machine works very well in the deep water, but can't reach the weeds that grow in the

shallow water near the shore. Last spring, a group of volunteers went out on the water in canoes and kayaks and pulled out lots of these weeds, and they will do it again next spring. We don't want water chestnuts in the Reservoir.

(Science Topics: Bioinvaders, seed cycle, seed adaptations, photosynthesis and co^2 - o^2 cycle)

8. Path along Sickle Brook

A little way up the main path, you can turn off to the right and follow another path. This leads into Lexington's Cataldo Reservation and follows along Sickle Brook, coming out near the bikeway. This is a place worth exploring sometime. It leads you into an area of very tall grass and next to a small pond. Sickle Brook flows from Arlington's Great Meadows, a natural area of 183 acres that is owned by the Town of Arlington but is located entirely in Lexington.

Issues: There is often a lot of trash at spots along this path. During heavy rains, a lot of water can flow down Sickle Brook into Mill Brook, causing flooding in Arlington. What kind of damage can a flood cause? Have you ever seen an area that was flooded?

(Science Topics: Human impact, watersheds, and water cycle)

9. Wetlands along Sickle Brook & Drake Village

We're going to follow along the main path. As you walk along this section of the path, you probably don't realize that you are actually walking on top of the Reservoir dam. To your left is the water and to your right are wetlands. The Drake Village housing complex



is located beyond the wetlands. This is a very peaceful walk with lovely trees and lots of greenery. It almost feels as though you are walking through a tunnel of trees, and if you're quiet you should be able to hear the birds singing.

Issues: For many decades, trees have been growing on the Reservoir dam. Since it is an earthen dam, trees and other vegetation growing on it anchor the soil and provide stability and erosion control. In recent times,

"No one knows yet exactly how many trees may be cut down."

however, engineers have decided that it isn't always safe for a dam to have trees growing on it. If a really huge storm, like a hurricane, were to knock over a tree growing on a dam then the roots might pull up, which

would make a hole in the dam that water could flow through. Also, as trees die and their roots decompose, water can get into the dam and weaken it. So, while the dam at the Reservoir is safe today, the Town is trying to figure out how to keep it that way. This means that some of the trees and shrubs may be removed. But no one knows yet exactly how many trees may be cut down or what creative ideas there might be to make sure that the dam is kept safe while keeping the area wooded. Do you have any ideas for making this area attractive without using deep-rooted plants and trees?

(Science Topics: Human impact and resource management)

10. Dam gate for Res outflow & Mill Brook start

We're now going to cross the iron bridge that goes over the dam's emergency spillway. Water flows through here when the water in the Res gets too high. Just past the bridge is the regular spillway gate. We can stop and look at the big metal plate that is



raised to let water flow out, or lowered to hold water in the Reservoir. The water flowing out from the Res meets with the water flowing in Sickle Brook to form Mill Brook. Mill Brook flows all through the middle of Arlington and into the



Lower Mystic Lake at Meadowbrook Park, near the cemetery. By raising and lowering the plate at the spillway, the Town controls the level of the water in the Res to keep it higher in the summer and lower the rest of the year.

The Reservoir can be used to hold water during a big storm, which helps to reduce flooding downstream along Mill Brook. Are there other ways that you can think of to help reduce flooding downstream of the Reservoir in Mill Brook?

Issues: The spillway and gate areas are old and need to be modernized. There is a lot of work that needs to be done here and it will cost the Town a lot of money. Careful planning is being done to make sure that everything is fixed correctly.

(Science Topics: Human impact, resource management, water cycle, and watershed)

11. Stump dump area above Hurd Field

The "Stump Dump" is the wide area along the Res, as you walk past the dam spillway gate. You can see the ruts and tire marks made by the trucks that have driven in this area. Sometimes it's really muddy here. Mill Brook flows



along beside the “Dump,” opposite the Res, and you can look down at Hurd Field on the other side of the brook.

Issues: For many years, the Town used this area to dump soil and tree debris. In earlier years, coal ash was dumped here. People are still dumping trash into Mill Brook from the Hurd Field parking lot. Can you think of problems caused by dumping? The area is much wider now than it was originally because of all the dumping. In the last few years, the Town has stopped most of the dumping and has removed much of the old piles. It still looks very “dumpy”, but better than before. In the future, some trees and bushes may be planted here to make it more attractive.



(Science Topics: Human impact)

12. Roadway and side path to Hurd Field

After passing the stump dump area on the main roadway, there is a path that goes off sharply to the right. This path crosses over Mill Brook and leads to Hurd Field and the Minuteman Bikeway. Further along on the left are several good spots for climbing down to the water for fishing and bird watching.

Issues: The ground here is covered with gravel and not much grows here. However, on the side away from the water is a thick growth of invasive Japanese Knotweed that has strangled out other plants. What are some ways to get rid of invasive plants? This area is also part of the dam and some trees may have to be removed.

(Science Topics: Bioinvaders)

13. Parking area for the beach

Now, here we are back at the beach parking lot! When we reach the gate to the beach, we will have completed a 1-mile walk. Did you ever think that there was so much to see in a 1-mile walk so close to home?

Issues: During heavy rains, the water will wash whatever is in the parking area into the Res. This may include trash or oil that has dripped from cars.

(Science Topics: Watersheds, water cycle, erosion, and soil)

Reservoir Goals & Committee



The Reservoir area needs thoughtful oversight and vision, so that the many residents, both old and young, who enjoy it will continue to do so for many generations. To help safeguard this space, on Monday, May 6, 2002 Arlington's Town Meeting approved the following Selectmen's recommendation:

That the Town hereby endorses the goals for the Arlington Reservoir area as recommended by the Reservoir Committee of the Vision 2020 Environmental Task Group and Vision 2020 Standing Committee, calculated to protect the ecosystem of the Arlington Reservoir area. In particular, the Town supports the following goals for the Arlington Reservoir and its role within the Mystic River Watershed:

1. **Water Quality:** To attain and maintain, in an ecologically sensitive manner, the appropriate water quality standard.
2. **Water Management:** To manage the Reservoir and its drainage to minimize downstream flooding, support wildlife habitat, and allow recreational uses.
3. **Flora and Fauna:** To protect and enhance the health and diversity of native plants and wildlife consistent with protecting public safety and recreational uses.
4. **Public Use and Open Space:** To promote and enhance public access for passive and active recreational uses while maintaining and protecting the unique natural setting of the Reservoir.
5. **Public Awareness:** To enhance awareness of the ecological, economic, recreational, and esthetic values of the Arlington Reservoir and its setting.

Vision 2020's Arlington Reservoir Committee is a group of concerned citizens working to implement these goals and solve the Reservoir's problems. Monthly meetings are held to discuss projects, news and priorities. These meetings are advertised in *The Arlington Advocate* and on the town's website calendar. Anyone with an interest in the Reservoir is welcome and encouraged to attend or to join us at one of the special clean-up events generally held in spring and fall.

Birds at the Arlington Reservoir

Swimmers:

Pied-billed Grebe	Wood Duck
Double-crested Cormorant	Redhead
Great Cormorant	Ring-necked Duck
Mute Swan	Canvasback
Canada Goose	Greater Scaup
Brant	Common Goldeneye
Greater White-fronted Goose	Bufflehead
Mallard	Ruddy Duck
American Black Duck	Hooded Merganser
Gadwall	Common Merganser
Common (Northern) Pintail	Red-breasted Merganser
Green-winged Teal	American Coot
Blue-winged Teal	Great Black-backed Gull
Northern Shoveler	Herring Gull
Eurasian Wigeon	Ring-billed Gull
American Wigeon	

30 swimmers

Nonswimmers:

Great Blue Heron	Pectoral Sandpiper
Green Heron	Common Snipe
Great Egret	Turkey Vulture
Black-crowned Night Heron	Sharp-shinned Hawk
Lesser (American) Golden Plover	Red-shouldered Hawk
Semipalmated Plover	Broad-winged Hawk
Killdeer	Red-tailed Hawk
Greater Yellowlegs	Osprey
Lesser Yellowlegs	Merlin
Solitary Sandpiper	American Kestrel
Spotted Sandpiper	Rock Dove
Hudsonian Godwit	Mourning Dove
Semipalmated Sandpiper	Common Nighthawk
Western Sandpiper	Chimney Swift
Least Sandpiper	Belted Kingfisher
White-rumped Sandpiper	Ruby-throated Hummingbird

Northern Flicker
Yellow-bellied Sapsucker
Downy Woodpecker
Hairy Woodpecker
Eastern Kingbird
Willow Flycatcher
Eastern Phoebe
Great Crested Flycatcher
Purple Martin
Tree Swallow
Northern Rough-winged Swallow
Bank Swallow
Barn Swallow
Blue Jay
Common (American) Crow
Black-capped Chickadee
Tufted Titmouse
White-breasted Nuthatch
Brown Creeper
Carolina Wren
House Wren
Northern Mockingbird
Gray Catbird
American Robin
Ruby-crowned Kinglet
Golden-crowned Kinglet
Cedar Waxwing
Brown Thrasher
European Starling
American Pipit
Warbling Vireo
Red-eyed Vireo
Nashville Warbler
Black-and-white Warbler
Northern Parula
Yellow Warbler
Magnolia Warbler
Black-throated Green Warbler

Blackburnian Warbler
Yellow-rumped Warbler
Chestnut-sided Warbler
Blackpoll Warbler
Palm Warbler
Northern Waterthrush
Common Yellowthroat
American Redstart
Red-winged Blackbird
Rusty Blackbird
Orchard Oriole
Baltimore Oriole
Common Grackle
Brown-headed Cowbird
Scarlet Tanager
Northern Cardinal
Rose-breasted Grosbeak
Blue Grosbeak
Indigo Bunting
House Finch
American Goldfinch
Savannah Sparrow
Northern (Dark-eyed) Junco
Snow Bunting
American Tree Sparrow
Chipping Sparrow
Field Sparrow
Vesper Sparrow
White-throated Sparrow
Swamp Sparrow
Song Sparrow
Lincoln's Sparrow
House Sparrow

103 nonswimmers

Thanks for joining us on our tour of the Res today! We hope you enjoyed it and learned some new things. For more about the Arlington Reservoir, you can visit the Arlington Reservoir website. This website has information about the Reservoir and about what the Reservoir Committee is doing to help protect and preserve it.



A Proud Past, A Focused Future

Visit us on the Web!

www.arlington2020.org/reservoir/

Version Date:

April 2003

Prepared By:

Leslie Mayer and David White

Photos By:

Leslie Mayer

Edited By:

Ann LeRoy,

Nancy Blasi and

**Arlington Vision 2020 Reservoir
Committee**

Cover art mural of the Reservoir done by Wendy Campbell's Bishop School students

APPENDIX E

10 January 2018

Updated Notes on the Importance of Arlington Reservoir to Birds and to the Arlington Community.

Karsten E. Hartel

I thought it would be helpful to update some comments that I made in 1999 about birds and birders at the Arlington Reservoir. At that time, I was Chair of the Arlington Vision 2020 Open Space Committee. The remarks included a list of about 150 species of birds known at that time from the Reservoir, comments from regional people, and a summary of the number of “birding” visits to the reservoir. A copy of that report follows below.

Since that time, more is known about which bird species that frequent the Reservoir, Cataldo Trail, and the abutting Lexington Community Farm. These abutting open spaces magnify the natural importance of the Reservoir. The new information has been gathered by a Cornell University Program called e-Bird which compiles, reviews, and digitally publishes bird occurrence information submitted by birders from around the world. To date, based on the eBird data we know that 214 species of birds have been recorded around the Reservoir. These data are based on some 1,858 observations submitted to e-Bird (see links below). Some of the reported species are common to abundant but some species are rare and are known from of a few records. I am not including a 2018 bird list since the e-Bird list can be found easily on the web at <http://ebird.org/ebird/hotspot/L358557>.

The comments in the 1999 report also document the importance of the reservoir to people who enjoy natural history based comments and the number of trips to in Reservoir in 1999.

Based on these notes I can say, as I wrote in 1999, that “There are no other habitats quite like these elsewhere in Arlington.” To keep this, all habitat types must be considered including, in part, shallow and deep water, mudflats, aquatic vegetation and scheduled adjustment of water levels.

About eBird: <http://ebird.org/content/ebird/about/>

eBird data for Arlington Reservoir: at <http://ebird.org/ebird/hotspot/L358557>

eBird seasonal occurrence chart for the Reservoir: at

<http://ebird.org/ebird/barchart?r=L358557&yr=all&m=>

Citation: eBird. 2012. eBird: An online database of bird distribution and abundance [web application]. eBird, Ithaca, New York. Available: <http://www.ebird.org>. (Accessed: Date January, 2018)].